

**PULP**



**PROFIT**

from millwide expertise,  
worldwide support.

Let Buckman  
help you  
produce clean,  
high-quality pulp  
at a lower  
total cost.

Your business isn't just about  
breaking down pulpwood.

It's also about breaking down  
barriers that keep your mill  
from realizing its full potential.

Like bottlenecks and inefficiencies.  
Scale and corrosion. Drainage, foam  
and pitch issues.

That's why Buckman offers comprehensive, on-site pulp mill  
programs and backs them up with a global team of experts in  
research and development, training, and field support. We can  
provide you with species-specific solutions for both hardwood and  
softwood pulp production, solutions that can deliver improved  
performance throughout the mill.



# Improve your entire pulping operation from wood yard to the final sheet.

## Enhance digester performance

Buckman can help you increase yield with highly effective digester additives that work to:

- Improve cooking
- Lower alkali consumption
- Eliminate recovery bottlenecks

## Reduce variation

We can also provide chemistries to control calcium carbonate, calcium sulfate, and barium sulfate scales. The result is better heat transfer, reduced steam use, and, best of all, less downtime for cleaning.

## Simplify brown stock management

Look to Buckman for effective brown stock washing through improved drainage and defoaming. The best washing works hand-in-hand with our pitch control programs that make achieving high-quality, clean pulp a lot easier.

### *Drainage aids*

Our state-of-the-art pulp mill drainage aid technologies can help you to:

- Increase drainage and eliminate production bottlenecks
- Improve washing for cleaner pulp and lower bleaching costs
- Eliminate defoamer-related pitch deposit issues

### *Pitch control*

Compared to traditional dispersants, Buckman's latest pitch control formulations vastly improve extractives control and removal. So you can:

- Wash more pitch out of your process and send cleaner pulp to your bleach plant and pulp dryer
- Eliminate troublesome pitch deposits and the associated downtime for cleaning
- Reduce your dirt count for improved quality and customer satisfaction

Our pitch control chemistries are effective for low-ash pulp production, too.



## Maximize recovery

By applying advanced chemistries that inhibit scale and effectively control scale, entrained air and foam in your evaporators, Buckman can help maximize throughput to your recovery boiler. At the boiler, we offer complete feedwater treatment programs and monitoring to ensure safe, cost-effective operation.

In addition, we can help improve chemical recovery even more—and save you money in the process—with green liquor and white liquor clarifying and settling aids and lime mud dewatering.

## Streamline bleach plant processes

Buckman brings advanced drainage technology, pitch control, and scale control technology to the bleach plant, helping you





to increase drainage, eliminate production bottlenecks, produce cleaner pulp, and reduce downtime. In addition to our unique metals management solutions, Buckman is proud to introduce Vybrant<sup>®</sup>, our newest generation in bleaching enzymatic technologies. These can help you achieve your target brightness using less bleach. That can result in significant savings.

### Improve pulp dryer efficiency

Buckman can help you produce on-spec, clean pulp more efficiently and reduce costly downtime by maintaining system cleanliness in the pulp dryer area. Rely on us for:

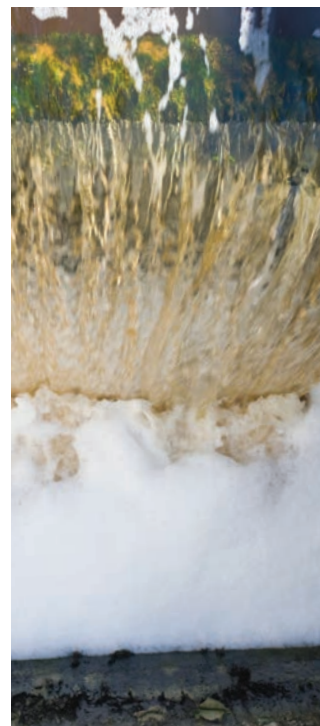
- Microbiological control and process boilouts

- Treatments to maximize your press section performance
- Organic and inorganic contaminant control to keep your felts and rolls clean
- Continuous, intermittent, and batch wash programs designed to meet your specific needs

### Buckman Green

#### Our color. Our commitment.

At Buckman we take our global citizenship seriously. In fact, we have established Buckman Green, a comprehensive approach to environmental stewardship, social leadership, and financial responsibility. By producing greener chemistries and energy-saving solutions, Buckman is finding the sustainable path forward for our customers and for ourselves.



### Learn more

Are you ready to break down inefficiencies and improve your pulpmaking operation? Find out more. Contact your local Buckman representative, or visit us at [buckman.com](http://buckman.com).

This is not an offer for sale. The product shown in this literature may not be available for sale and/or available in all geographies where Buckman is represented. The claims made may not have been approved for use in all countries. Buckman assumes no obligation or liability for the information. Please contact your Buckman sales representative for more information.

Seller warrants that this product conforms to its chemical description and is reasonably fit for the purpose referred to in the directions for use when used in accordance with the directions under normal conditions. Buyer assumes the risk of any use contrary to such directions. Seller makes no other warranty or representation of any kind, express or implied, concerning the product, including **NO IMPLIED WARRANTY OF MERCHANTABILITY OR FITNESS OF THE GOODS FOR ANY OTHER PARTICULAR PURPOSE**. No such warranties shall be implied by law and no agent of seller is authorized to alter this warranty in any way except in writing with a specific reference to this warranty. AP06H (05/18)

Argentina +54 11 4701-6415; Australia +61 (2) 6923 5888; Belgium +32 9 257 92 11; Brasil +55 (19) 3864-5000; Chile +56-2) 2946-1000; China +86-21) 6921-0188; India +91) 44-2648 0220  
Indonesia +(62) 21-2988 8288; Japan +(81) 3 6202 1515; Korea +(82) 31-416 8991; Mexico +52 (777) 329 3740; Singapore +(65) 6891 9200; South Africa +27 (31) 736 8800; United States +1 (901) 278-0330

Global Headquarters at 1256 N. McLean Blvd., Memphis, TN 38108, USA